

# SR 248 Realignment

#86853 SR 248 Sec 05S

Bath Borough, Northampton County

## Needs:

- Circuitous alignment of SR 248 causes excessive turning movements, driver confusion and congestion in the Borough
- High and growing truck volumes
- Existing and future traffic congestion
- Remove the posting on Northampton Street over Monocacy Creek
- Pedestrian safety



Villa Grande Pizzeria  
Pizza • \$\$

W Northampton St

S. Seem Antiques  
& Artisans  
Antique store

M.S. Techz

Main St

248

Bridge St

Schaffer St

PaPa Sarge's  
Homemade Pierogies

Monocacy Creek Park

Byron Place  
Pizzeria & Italian  
Italian • \$\$

W Main St

Center St

Red Wolf Bar and Grille  
Grill • \$\$

W Main St

7-Eleven  
FreshCoffee To Go

Sunoco Gas Station  
Find A Gas  
Station Near You

West St

Bath

W Main St

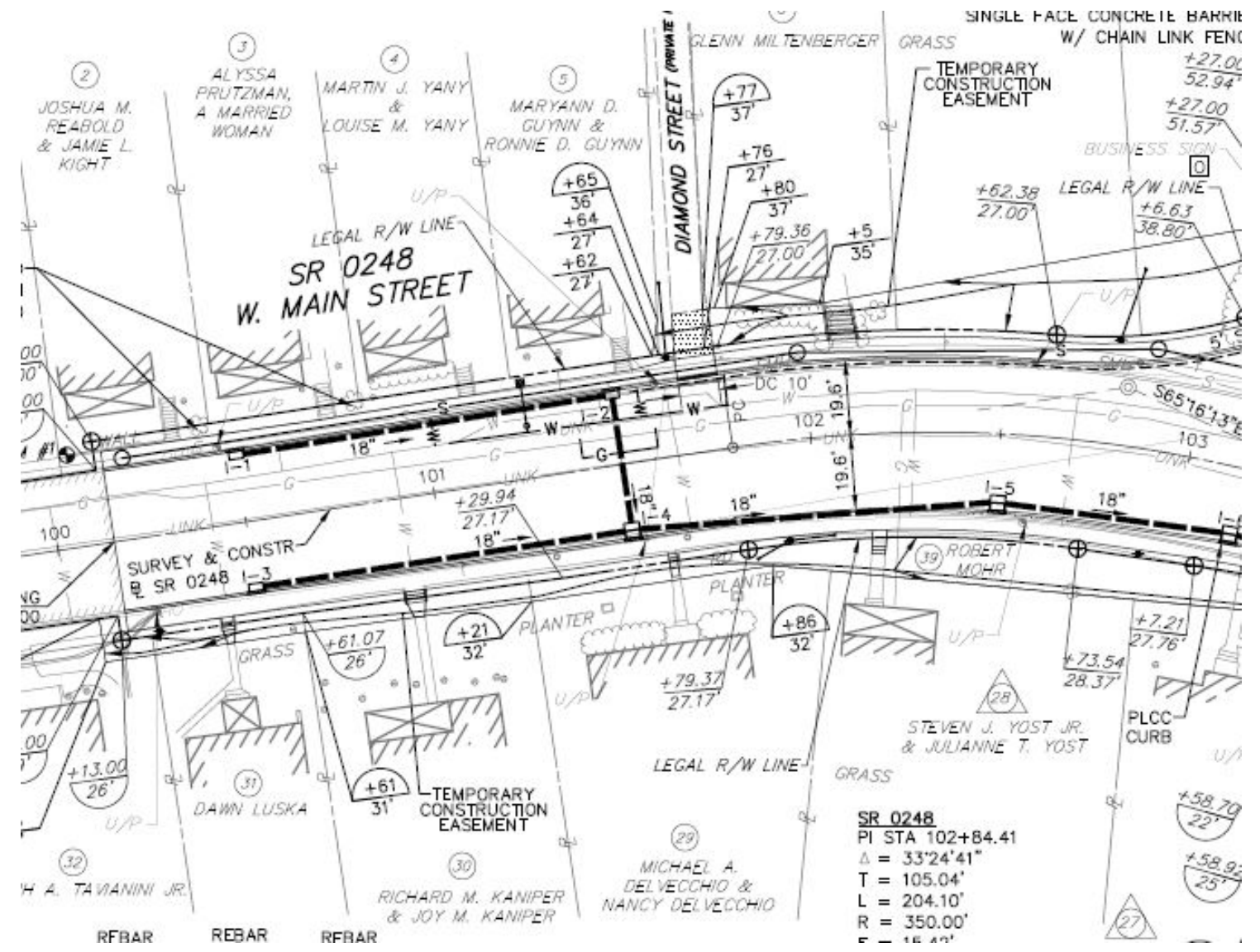
Spring St

987

James St

# West End...

- NEW SIDEWALKS
- NEW DRAINAGE
- RECONSTRUCT SR 248







# Construction Staging (how to build it)

- Utilities (overhead and UGI) will move first – Summer/Fall 2024
- Sewer and water relocations and improvements – Fall 24-Winter 25 [end of Northampton St closed past Old Forge, SR 248 open]
- Drainage, sidewalks, paving - Route 248 (Main St) – Winter/Spring 2025
- Bridge Construction – 2025 [Northampton closed at Monocacy Creek]
- Winter shutdown? – Winter 25-26 [everything open]
- Reconstruct Northampton Street east of the bridge – Spring 2026 [Northampton St one way, about a 4-6 weeks]